

BLOCK 14 PLAT C

IN OGDEN CITY

SCALE 1" = 50'

11

TAXING UNIT: 25

28TH

SEE BOOK 1, PAGE 48

STREET

SEE PAGE 12

MONROE

QUINCY

SEE PAGE 10

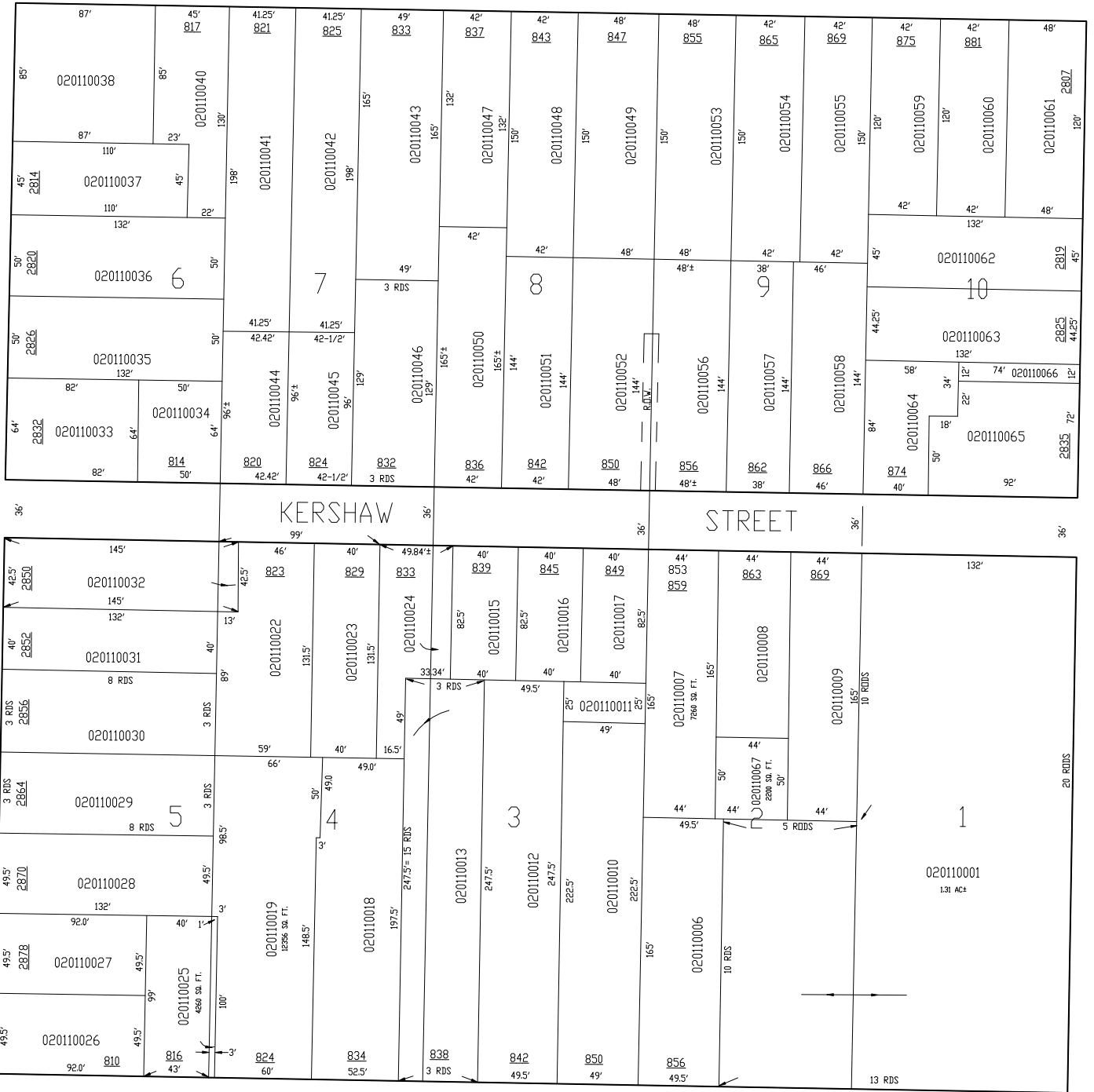
29TH

SEE PAGE 79

STREET

FOR COMPLETE ENG DATA SEE
ORIGINAL DEDICATION PLAT IN
BOOK 2, PAGES 1-4 OF RECORDS.

JPS 7-95



29TH

SEE PAGE 79

STREET

FOR COMPLETE ENG DATA SEE
ORIGINAL DEDICATION PLAT IN
BOOK 2, PAGES 1-4 OF RECORDS.

JPS 7-95